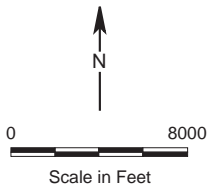


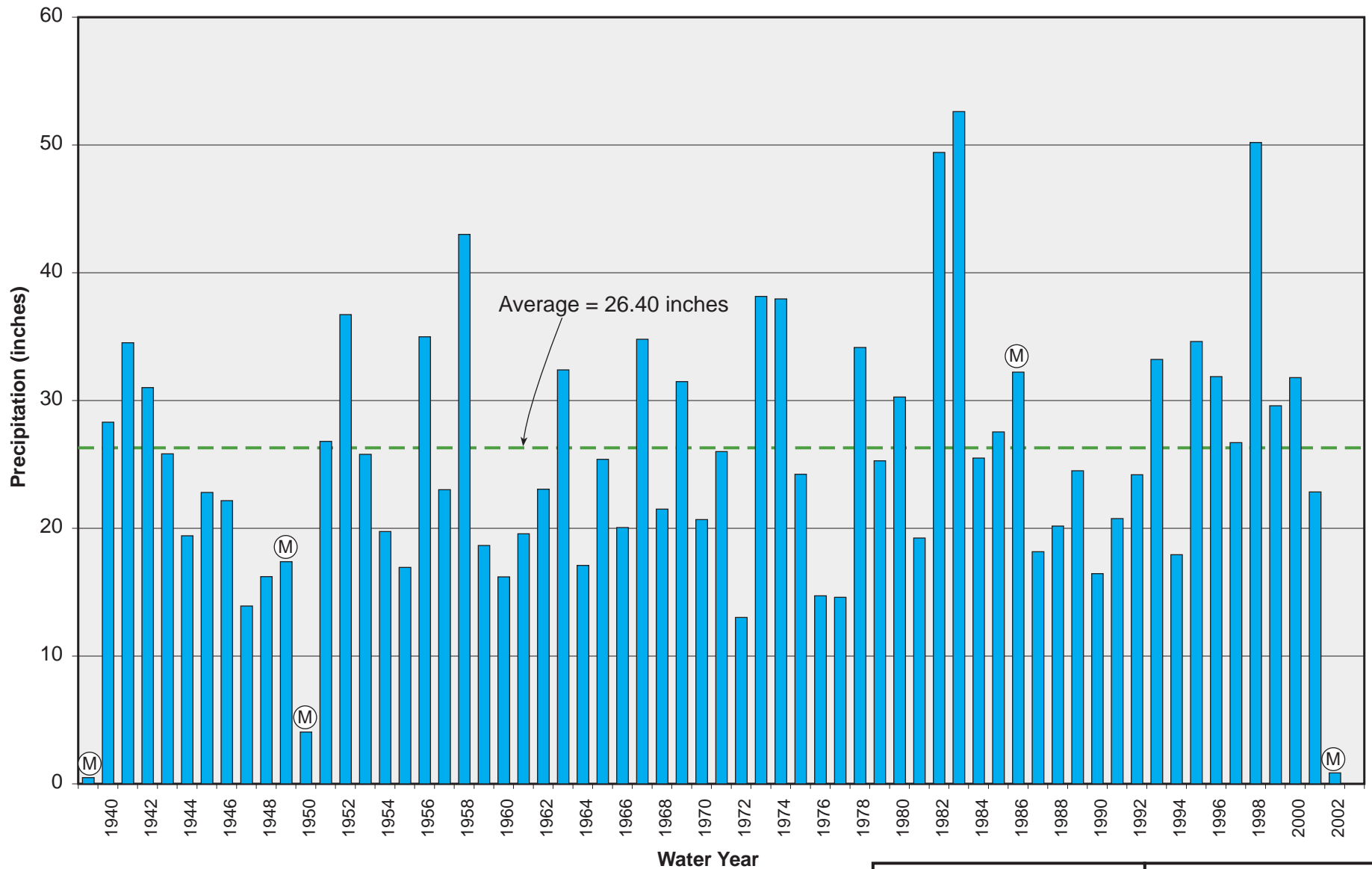
**LEGEND**

- Proposed Pilarcitos well field
- Watershed
- Groundwater basin
- Gauging station



June 2003
TODD ENGINEERS Emeryville, California

<p><b>Figure 1</b> <b>Study Area</b> <b>Map</b></p>
---



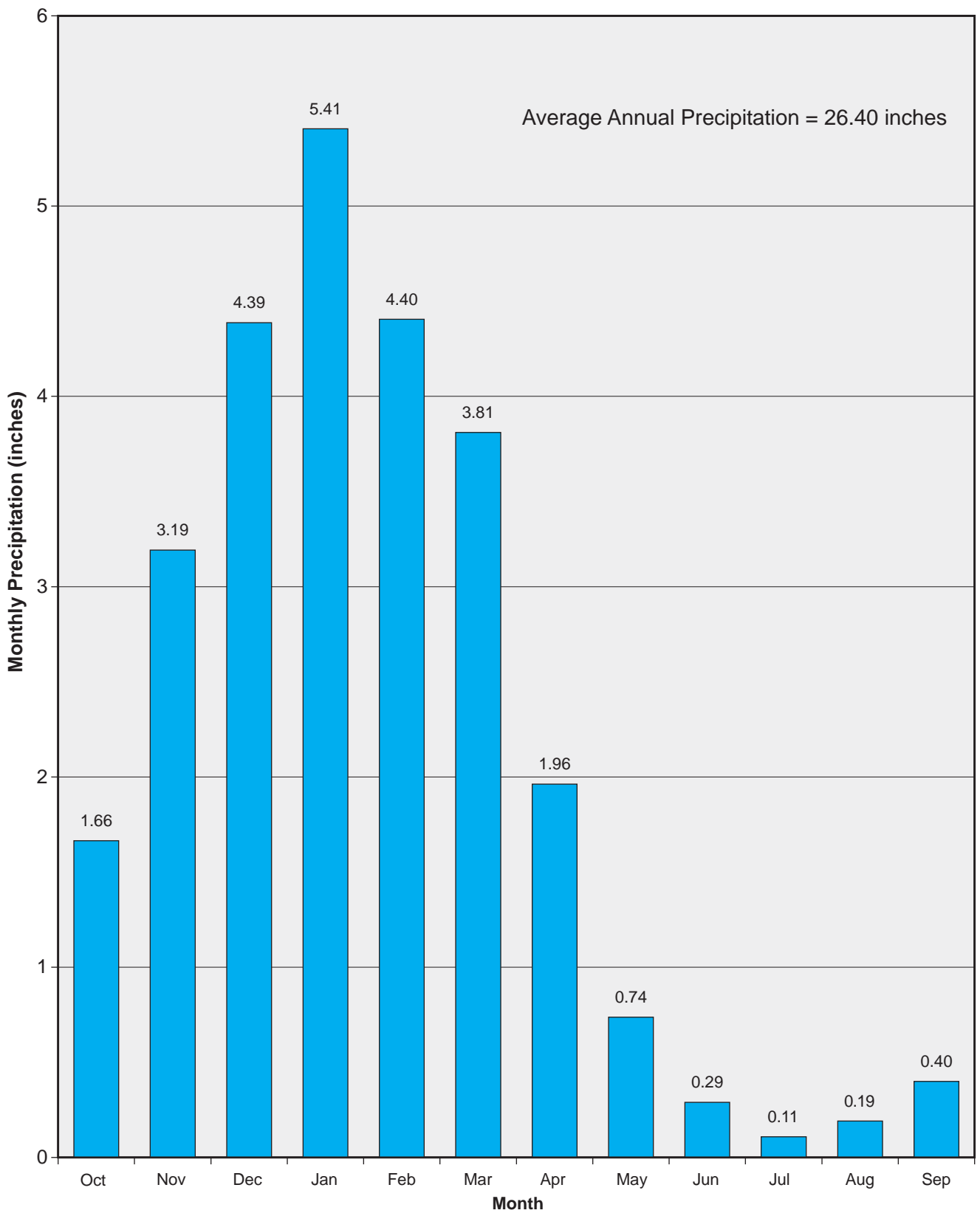
**Legend**

(M) Missing data

June 2003

TODD ENGINEERS  
Emeryville, California

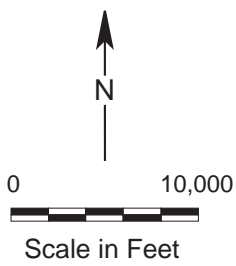
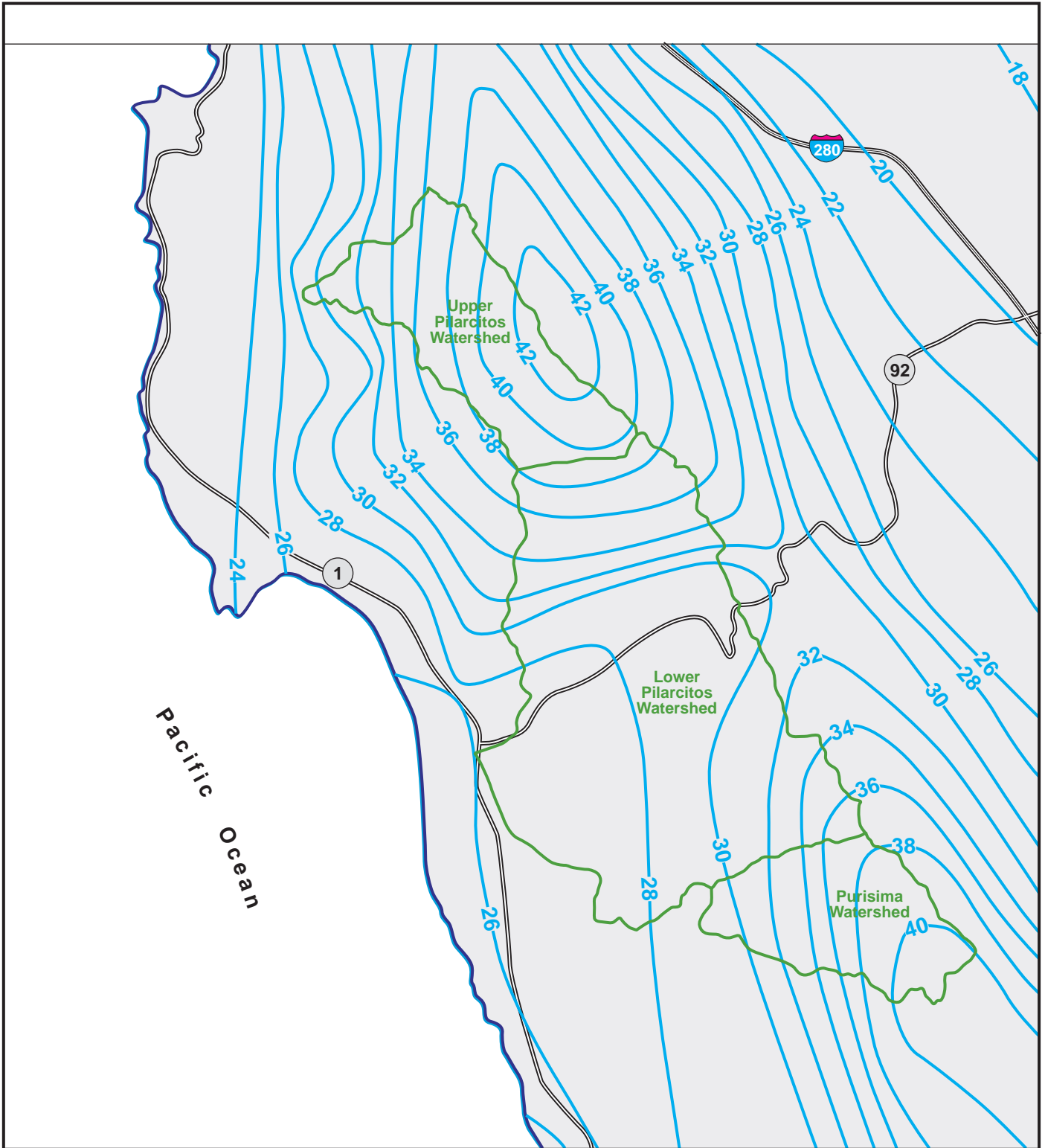
**Figure 2**  
**Precipitation**  
**at Half Moon Bay**  
**Airport**



June 2003

TODD ENGINEERS  
Emeryville, California

**Figure 3**  
**Average**  
**Monthly Precipitation**  
**for Half Moon Bay**



June 2003  
TODD ENGINEERS  
Emeryville, California

**Figure 4**  
**Areal Distribution**  
**of Mean Annual**  
**Precipitation**



1977

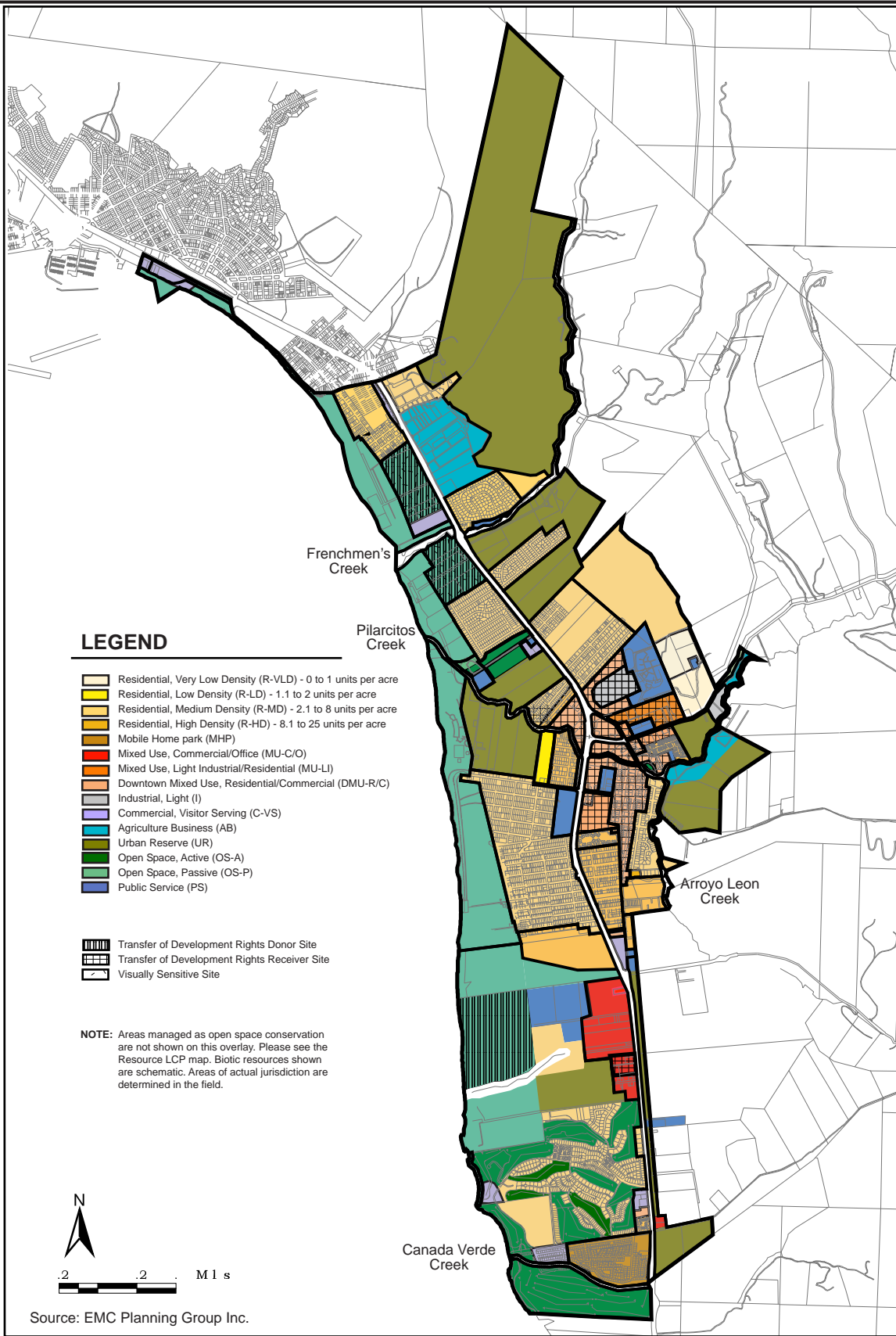
1987

2002

**Legend**

- Urban
- Irrigated agriculture
- Open space

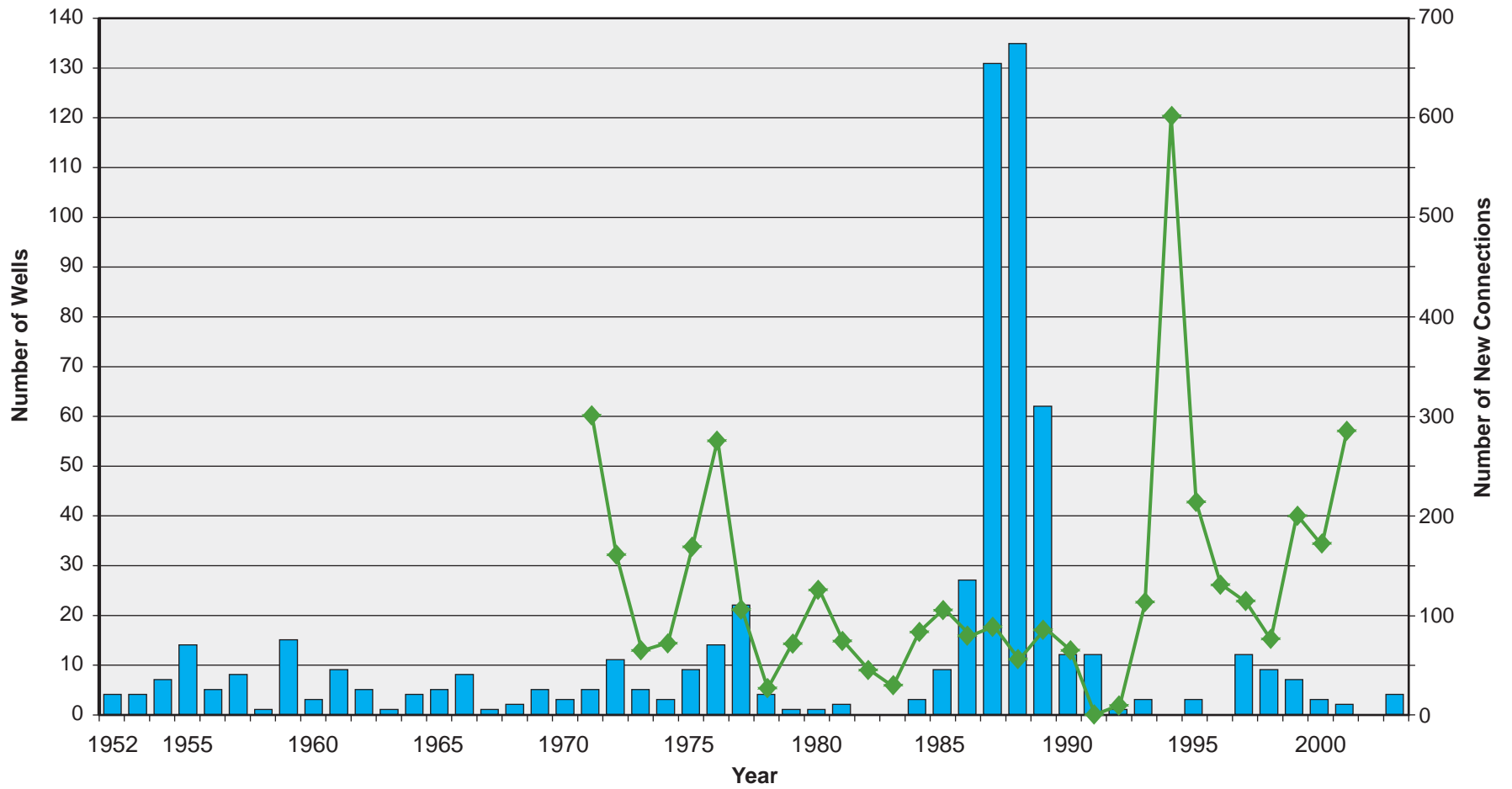
June 2003	<b>Figure 5</b> <b>Groundwater Basin</b> <b>Land Use</b>
TODD ENGINEERS Emeryville, California	



June 2003

TODD ENGINEERS  
Emeryville, California

**Figure 6**  
**Half Moon Bay**  
**Land Use Plan**

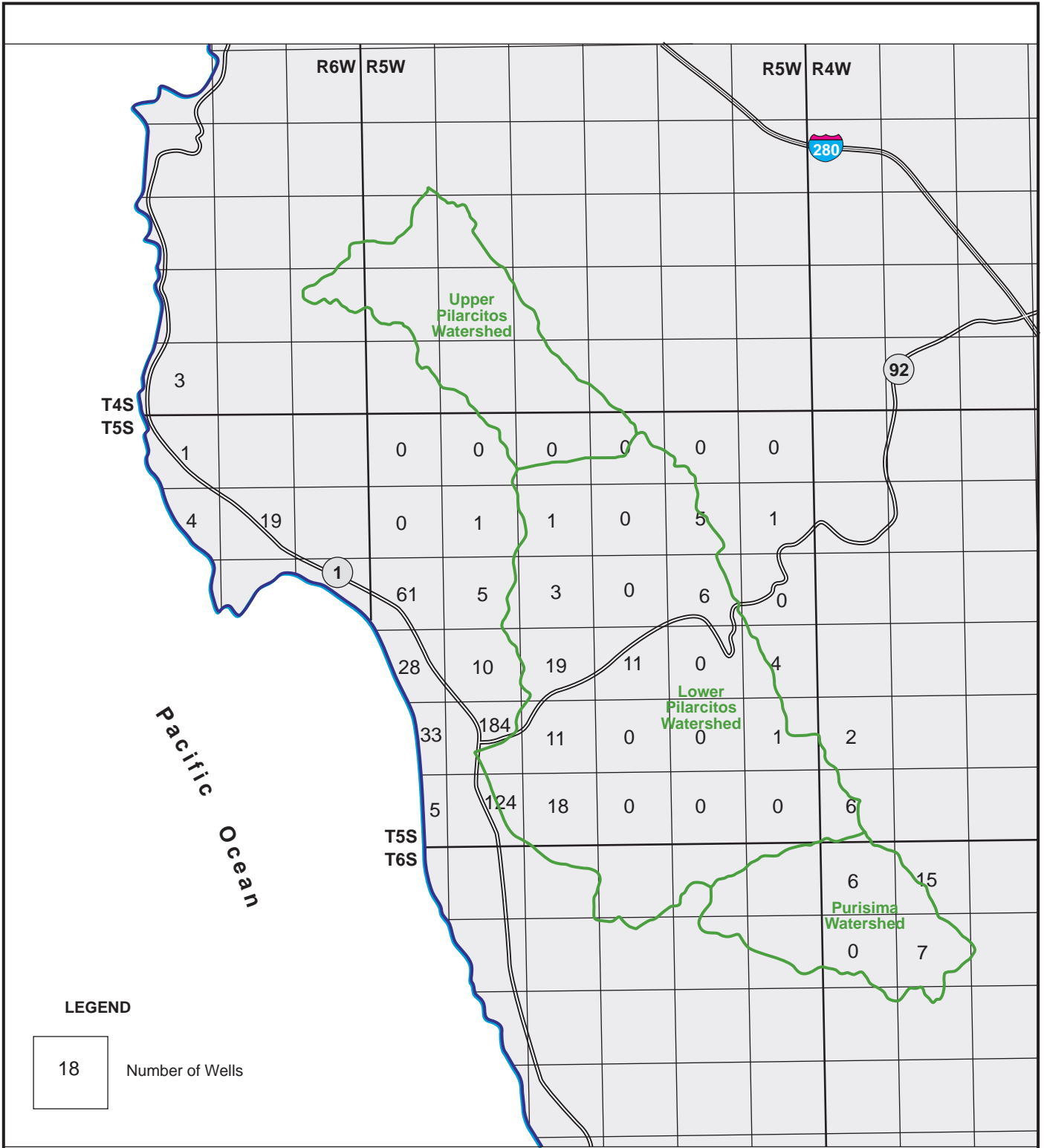


**Legend**

- New Wells  
N = 612; no dates on 2 wells
- New Connections

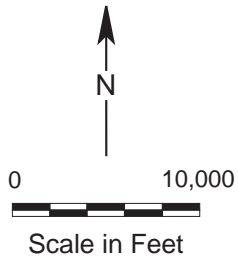
June 2003
TODD ENGINEERS Emeryville, California

<b>Figure 7</b> <b>Annual Wells Drilled</b> <b>and CCWD</b> <b>New Connections</b>
---

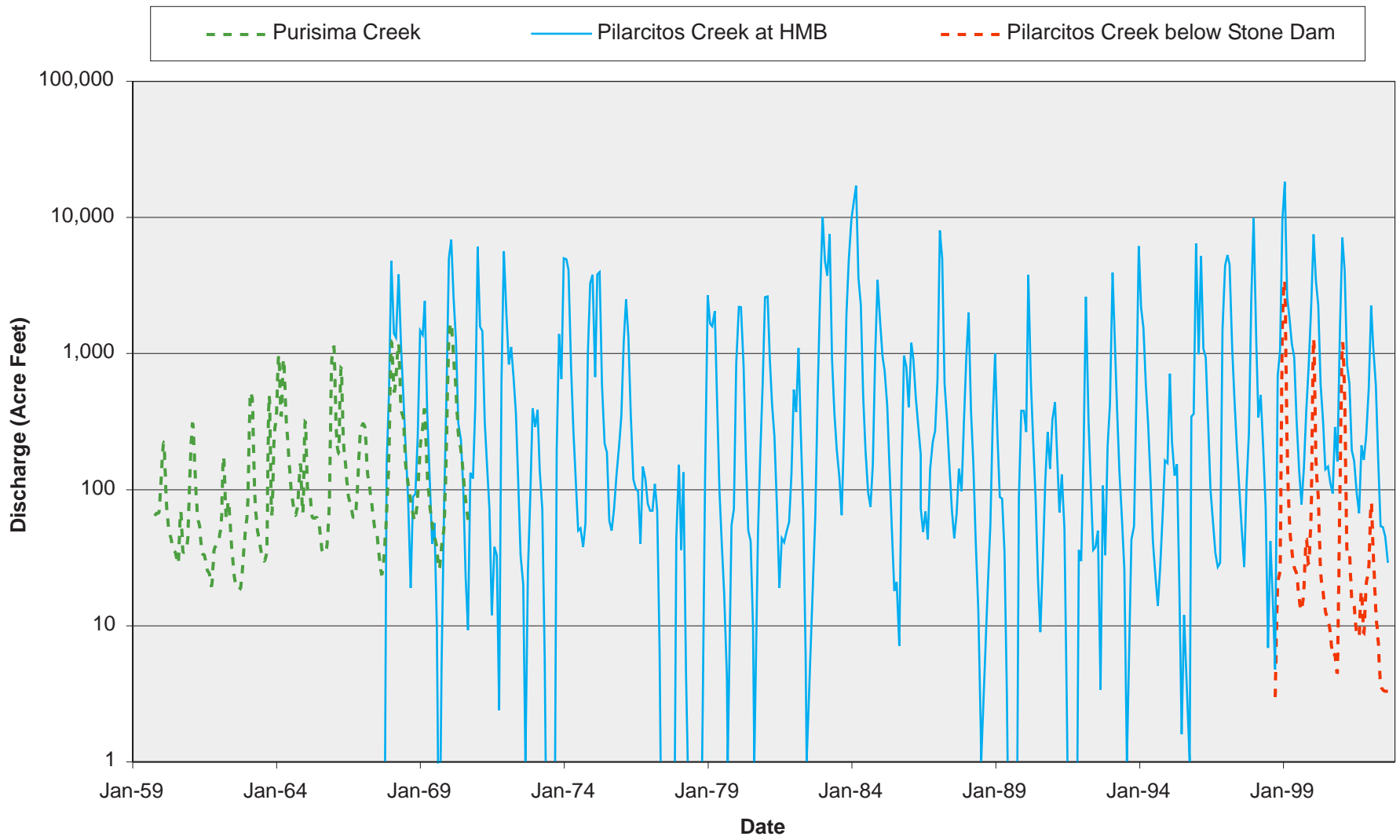


**LEGEND**

18 Number of Wells



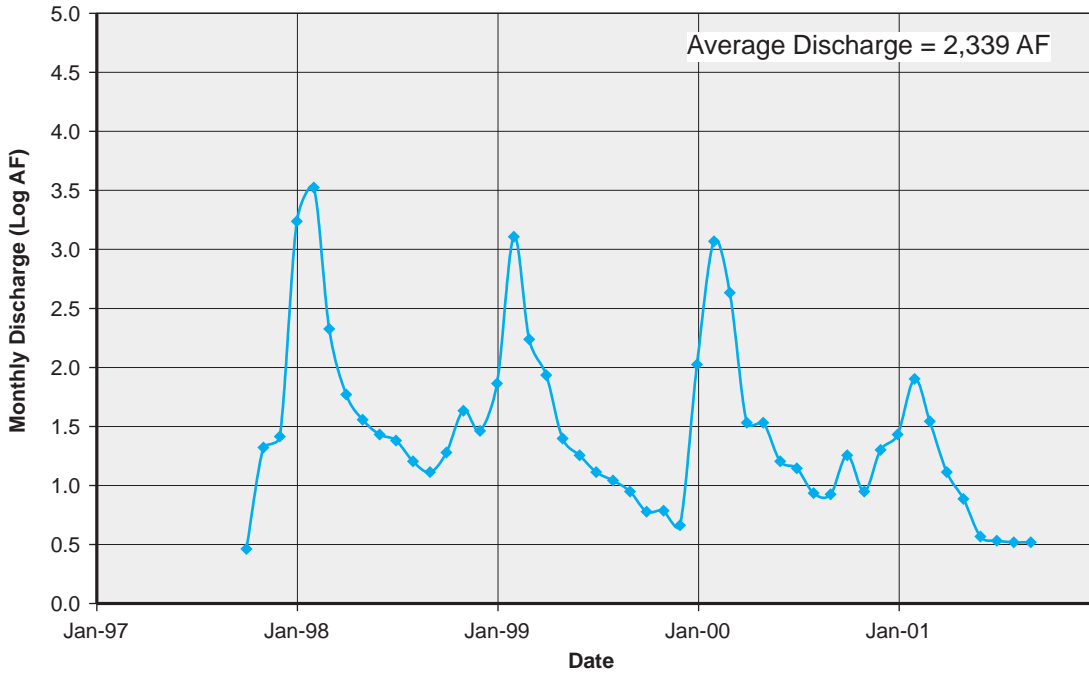
June 2003	<b>Figure 8</b> <b>Areal Distribution of</b> <b>Water Well Drillers</b> <b>Reports,</b> <b>Half Moon Bay</b>
<b>TODD ENGINEERS</b> <b>Emeryville, California</b>	



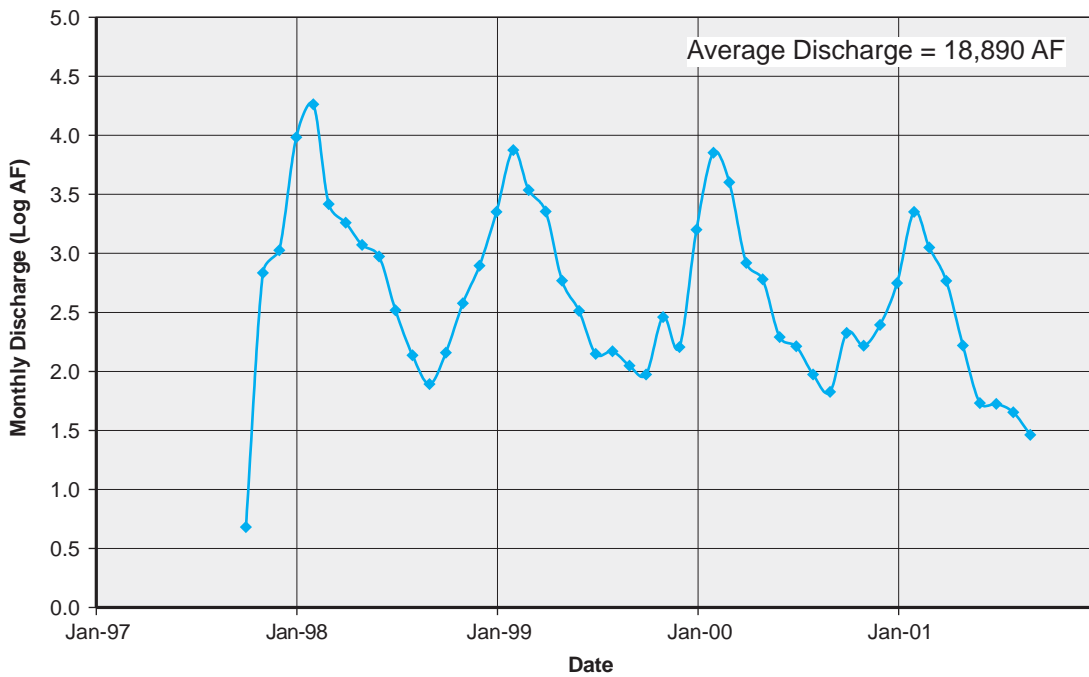
June 2003  
 TODD ENGINEERS  
 Emeryville, California

**Figure 9**  
**Streamflow near**  
**Half Moon Bay**

### Pilarcitos Creek below Stone Dam



### Pilarcitos Creek at Half Moon Bay

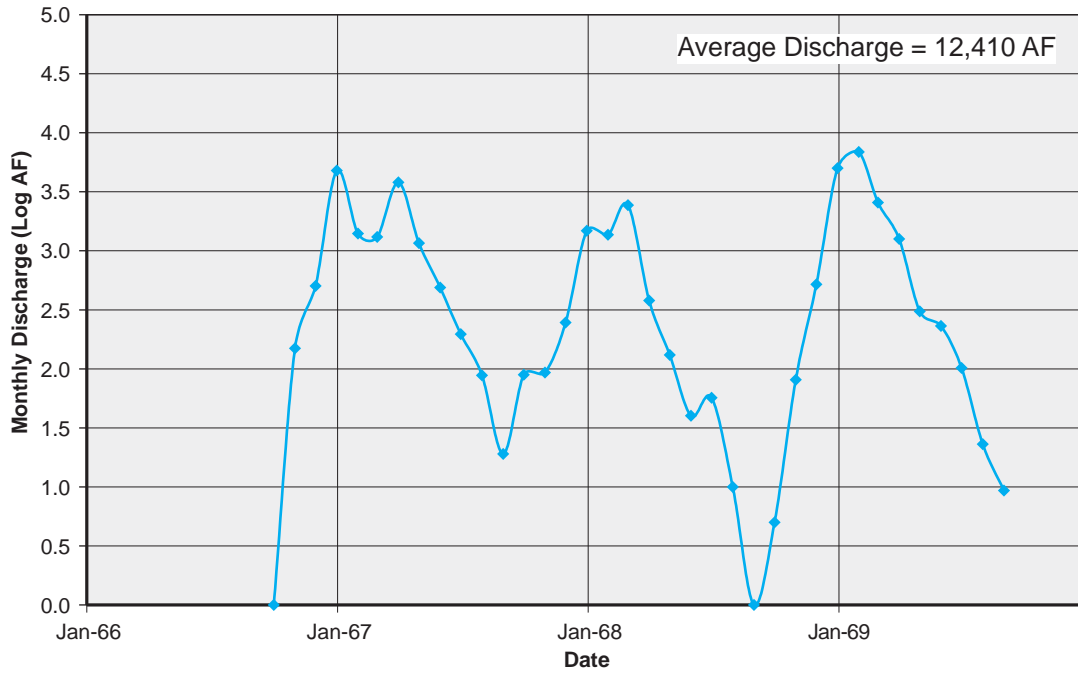


June 2003

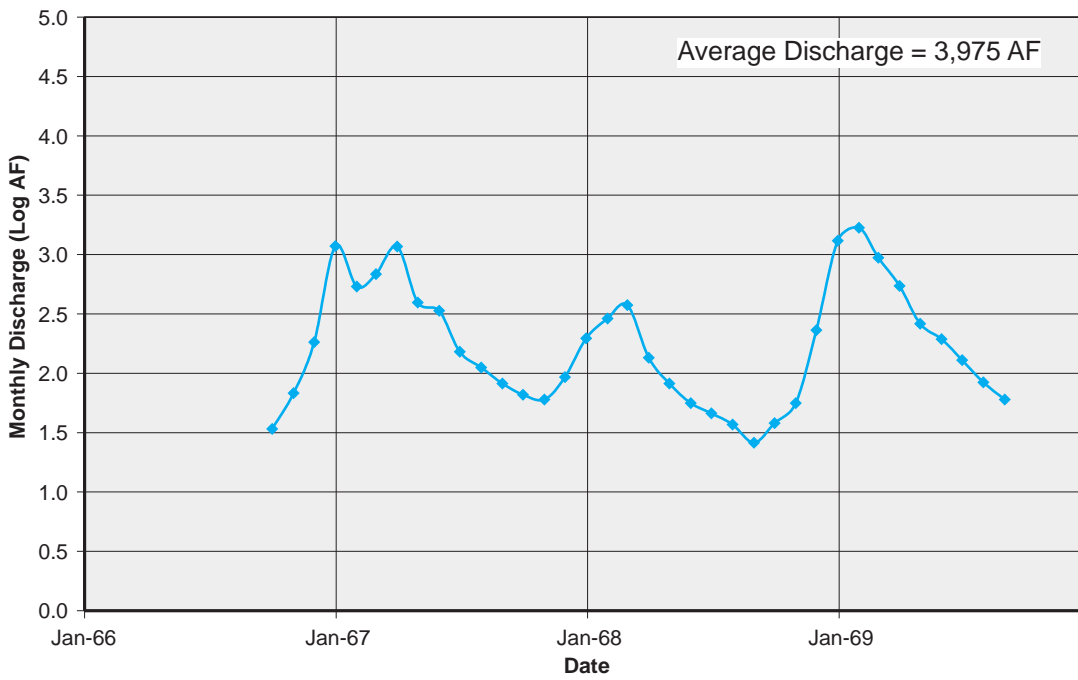
TODD ENGINEERS  
Emeryville, California

**Figure 10**  
**Streamflow for**  
**Pilarcitos Creek below**  
**Stone Dam (1997-2001)**

### Pilarcitos Creek at Half Moon Bay



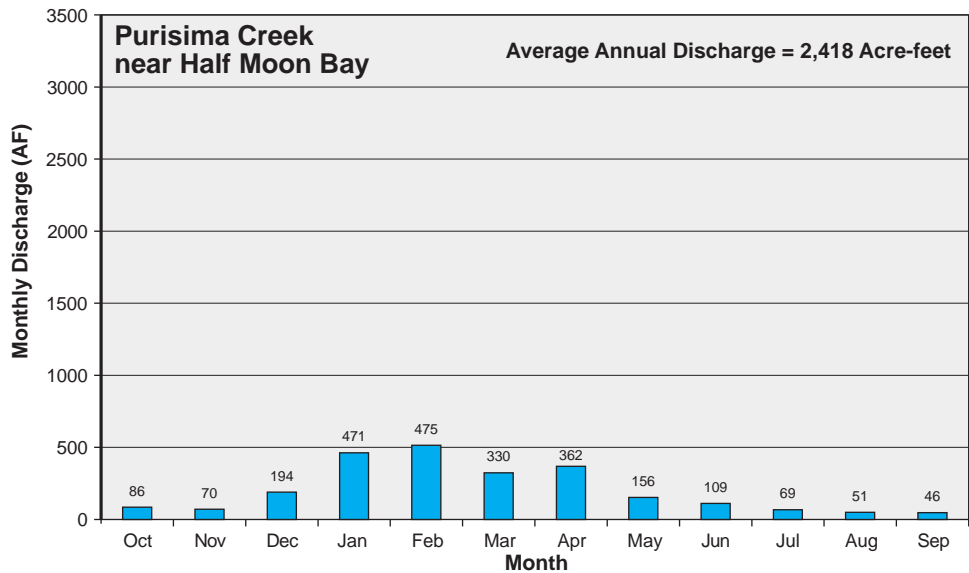
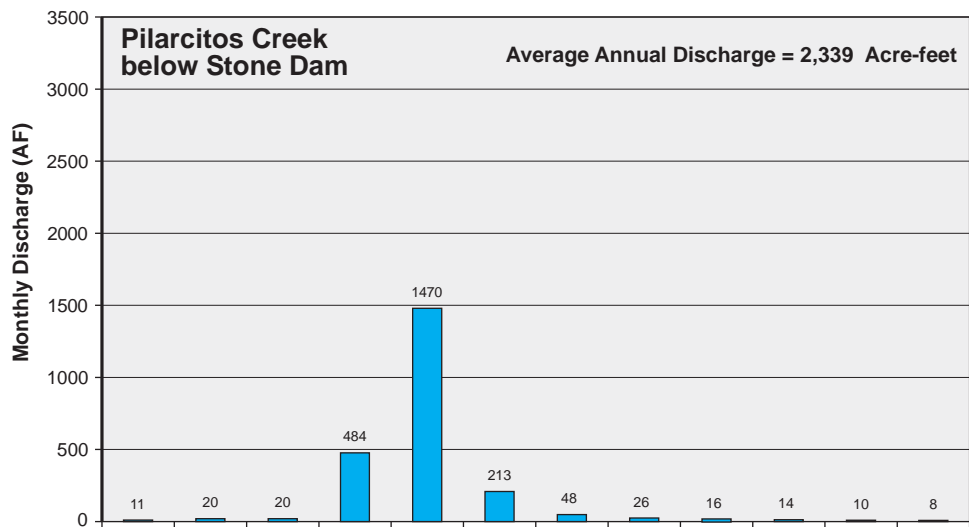
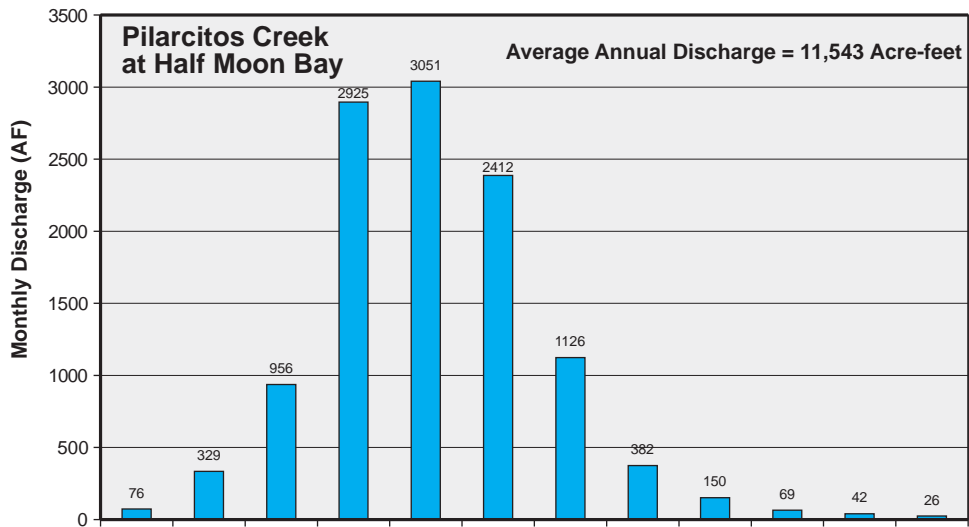
### Purisima Creek near Half Moon Bay



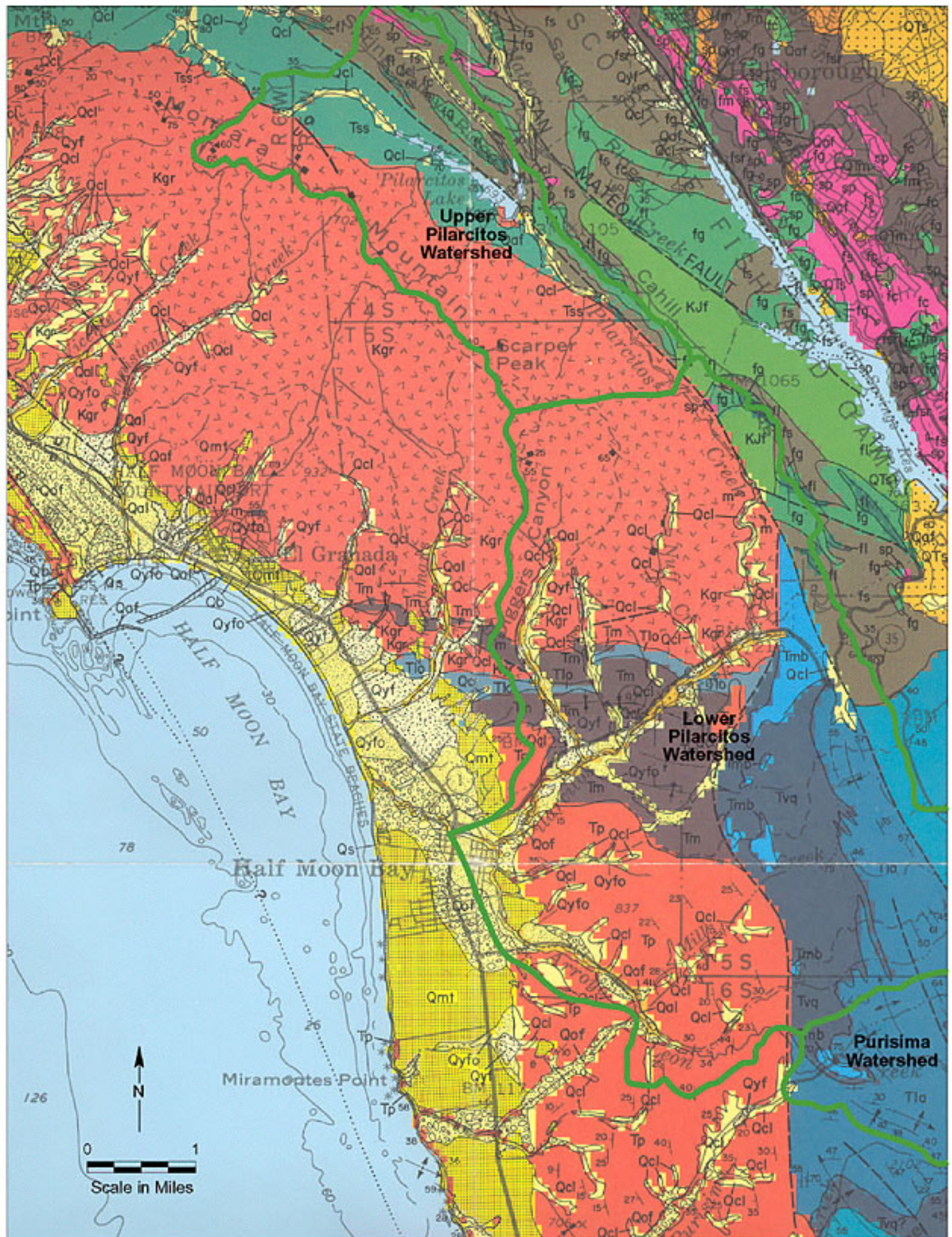
June 2003

TODD ENGINEERS  
Emeryville, California

**Figure 11**  
**Streamflow for**  
**Purisima Creek near**  
**Half Moon Bay**  
**(1966-1969)**



June 2003	<b>Figure 12</b> Average Monthly Discharge at Streamflow Stations
TODD ENGINEERS Emeryville, California	

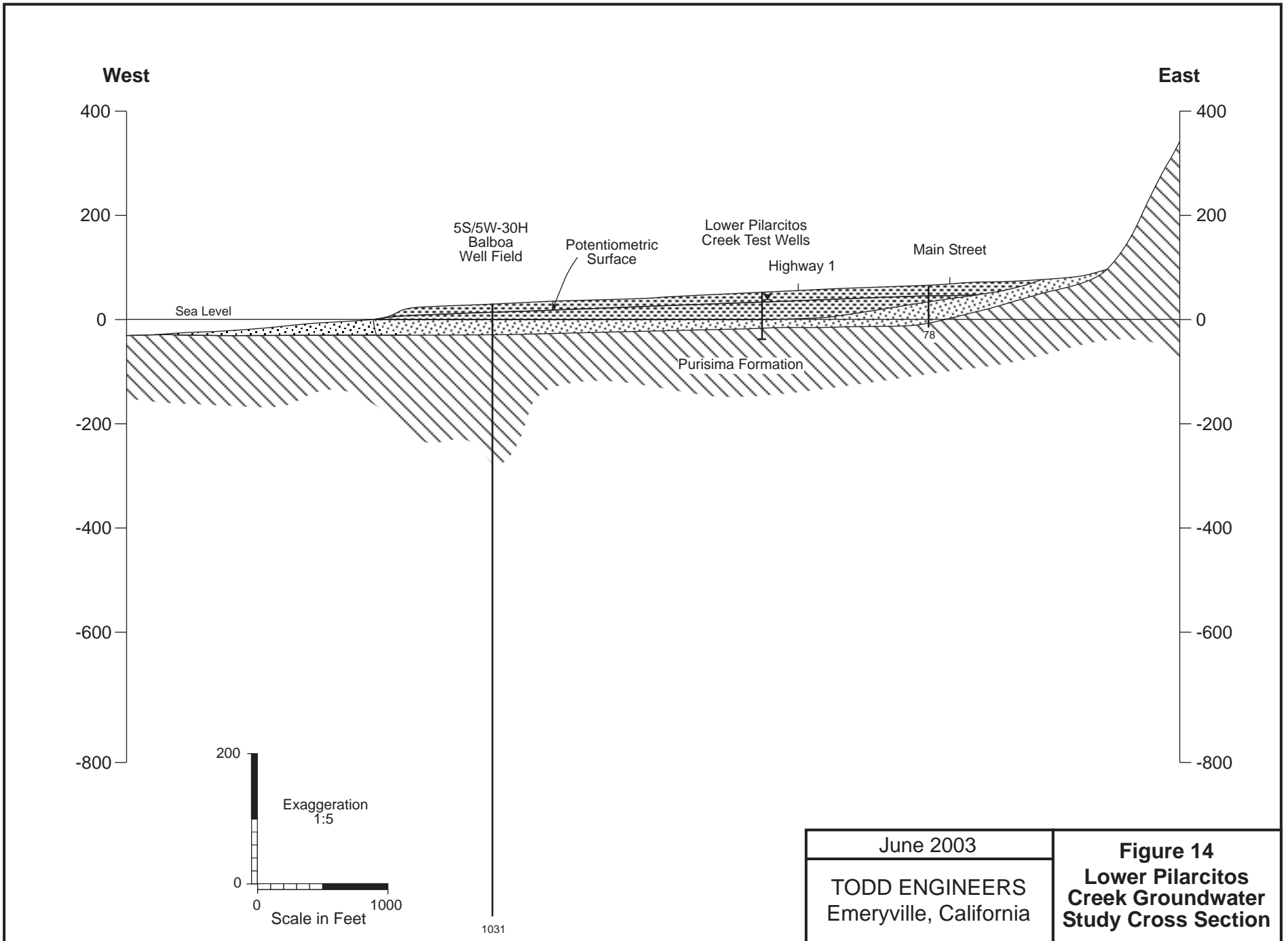


	Younger (inner) Alluvial Fan Deposits		Purisima Formation, undivided		Granitic Rocks of Montara Formation
	Younger (outer) Alluvial Fan Deposits		Monterey Formation		Franciscan Assemblage, undivided
	Basin Deposits		Lompico Sandstone		Sandstone
	Coluvium		Lambert Shale		Greenstone
	Sand Dune and Beach Deposits		Mindogo Basalt and related volcanic rocks		Conglomerate
	Alluvium		Vaqueros Sandstone		
	Coarse Grained Older Alluvial Fan and Stream Terrace Deposits		Butano Sandstone		
	Marine Terrace Deposits		Unnamed Sandstone, Shale, and Conglomerate		

June 2003

TODD ENGINEERS  
Emeryville, California

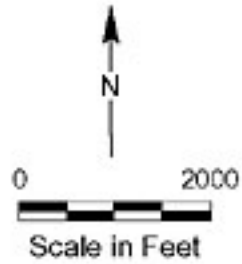
Figure 13  
Geology  
in the Vicinity of  
Half Moon Bay





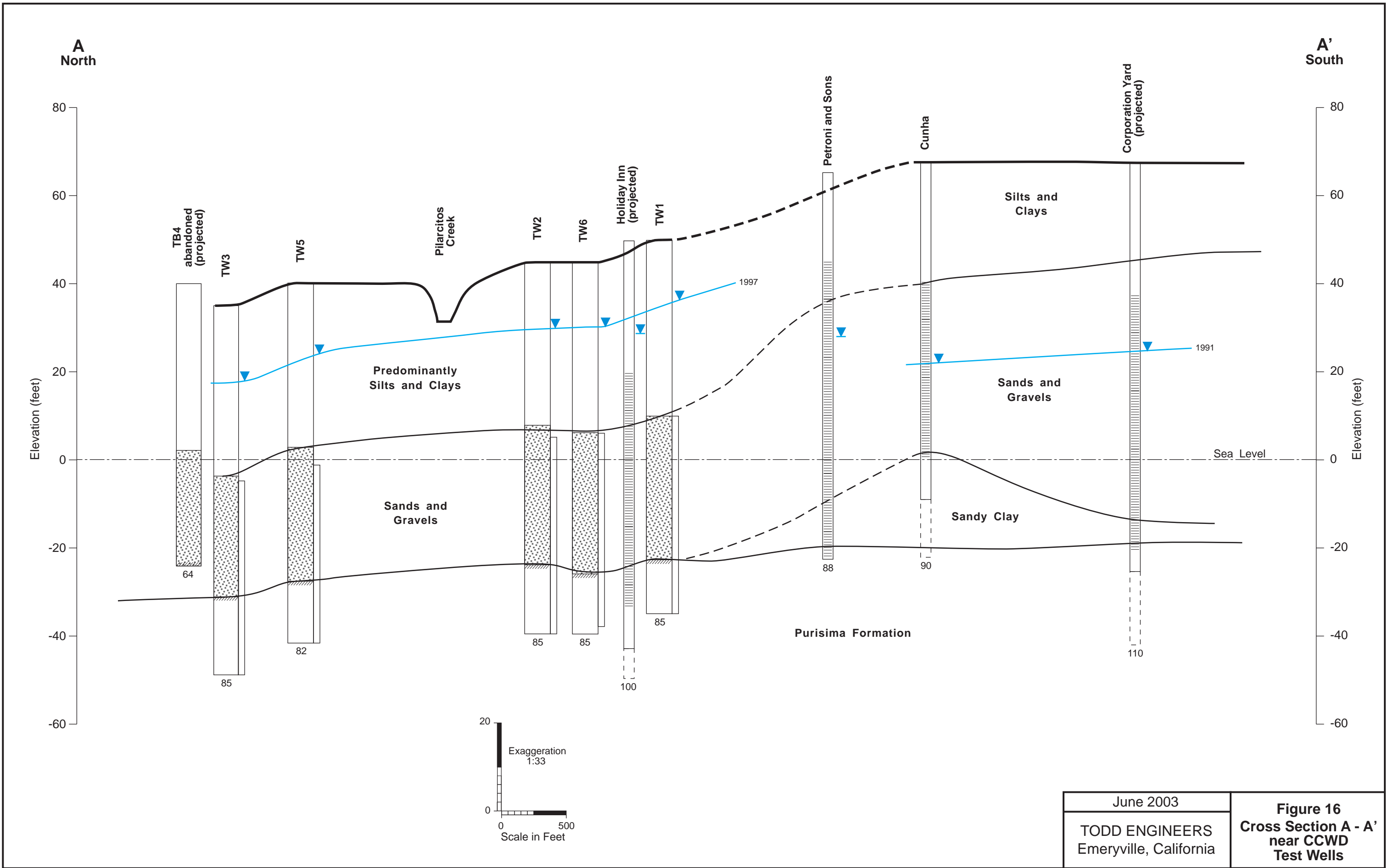
**LEGEND**

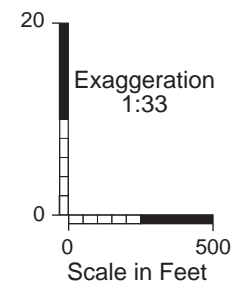
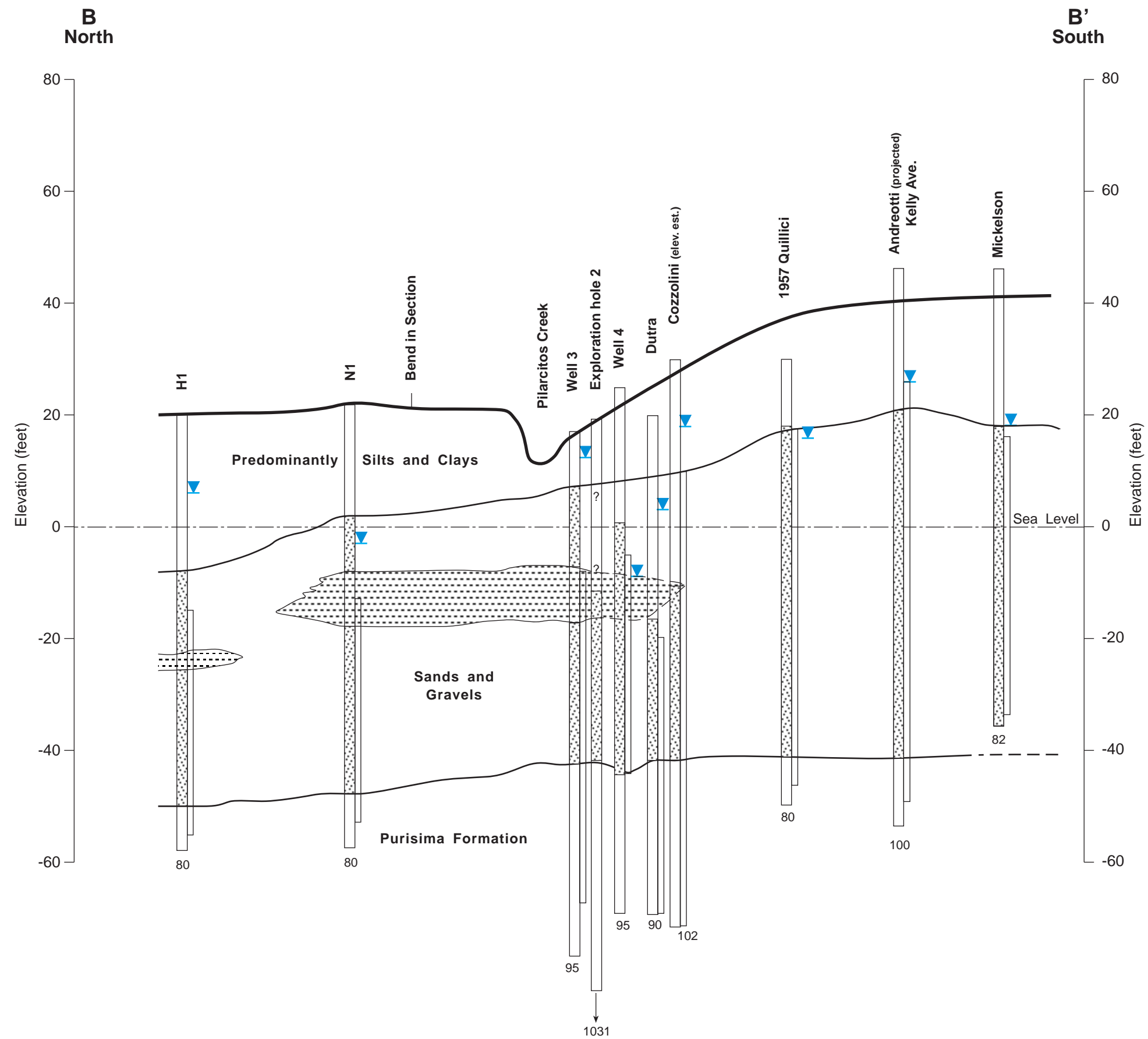
- Basin boundary
- Gauging station
- Well
- Water level record wells



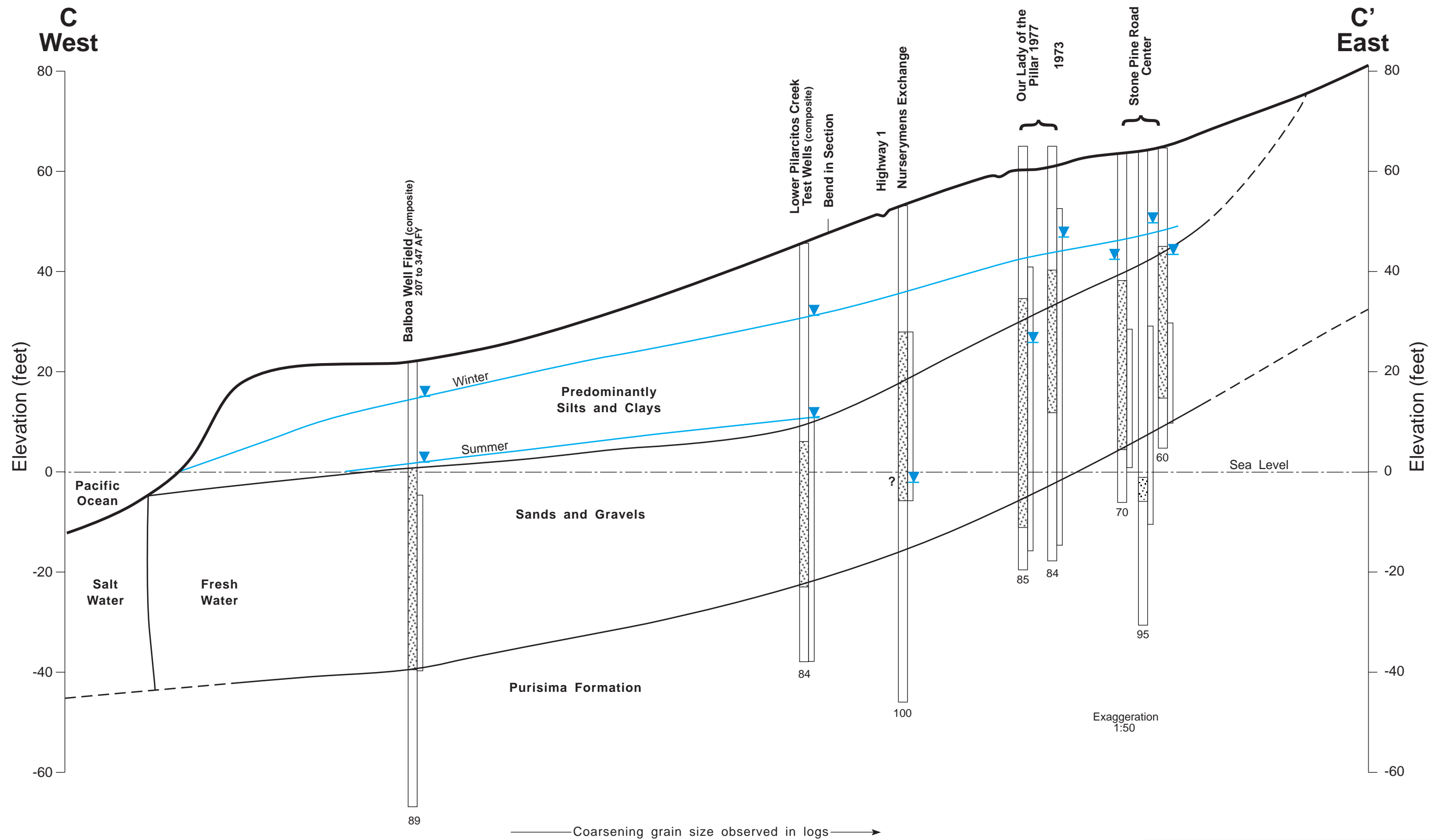
June 2003  
TODD ENGINEERS  
Emeryville, California

**Figure 15**  
**Cross Section**  
**Location Map**



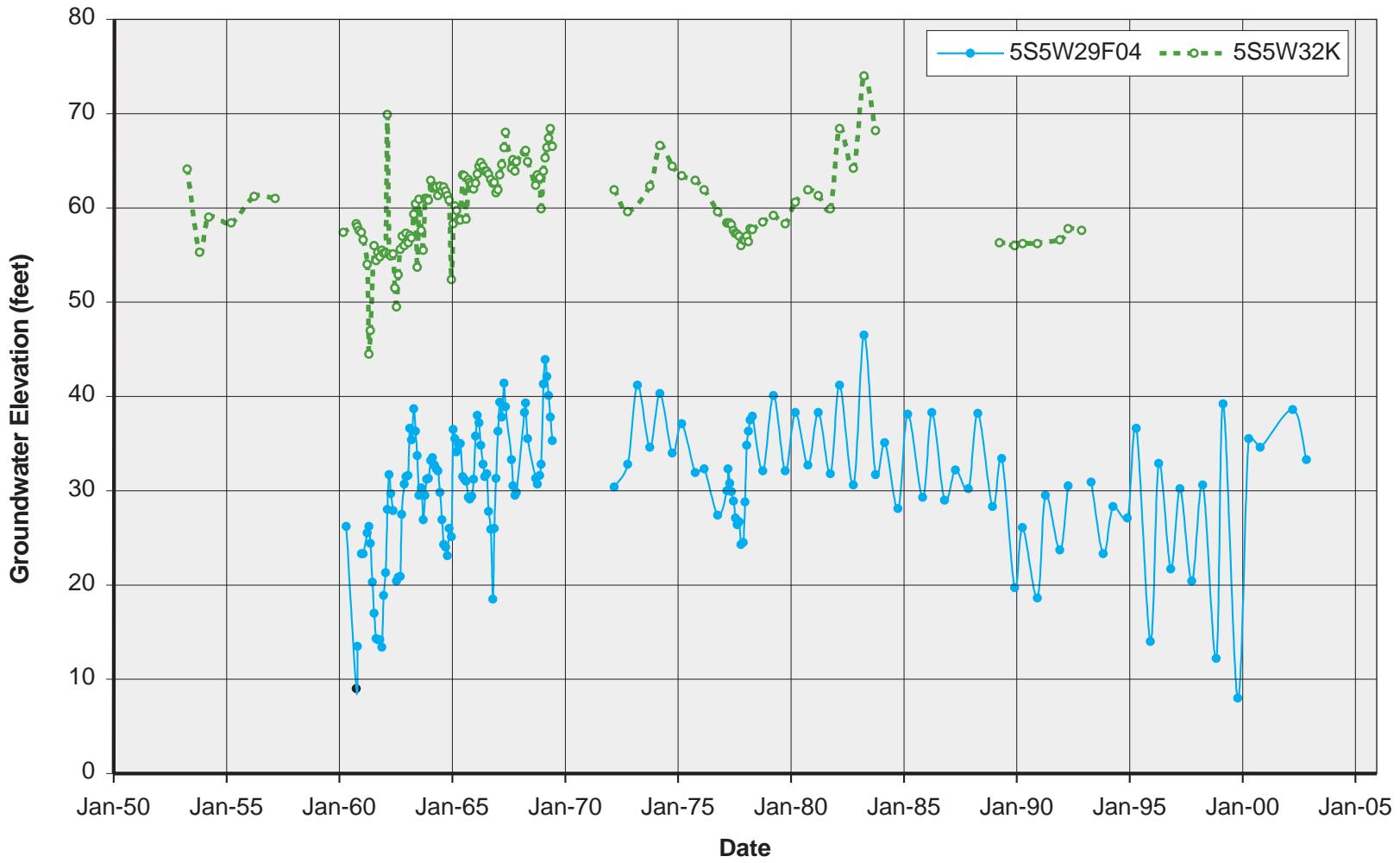


June 2003	<b>Figure 17</b> <b>Cross Section B - B'</b> <b>near</b> <b>Balboa Well Field</b>
TODD ENGINEERS Emeryville, California	



June 2003  
TODD ENGINEERS  
Emeryville, California

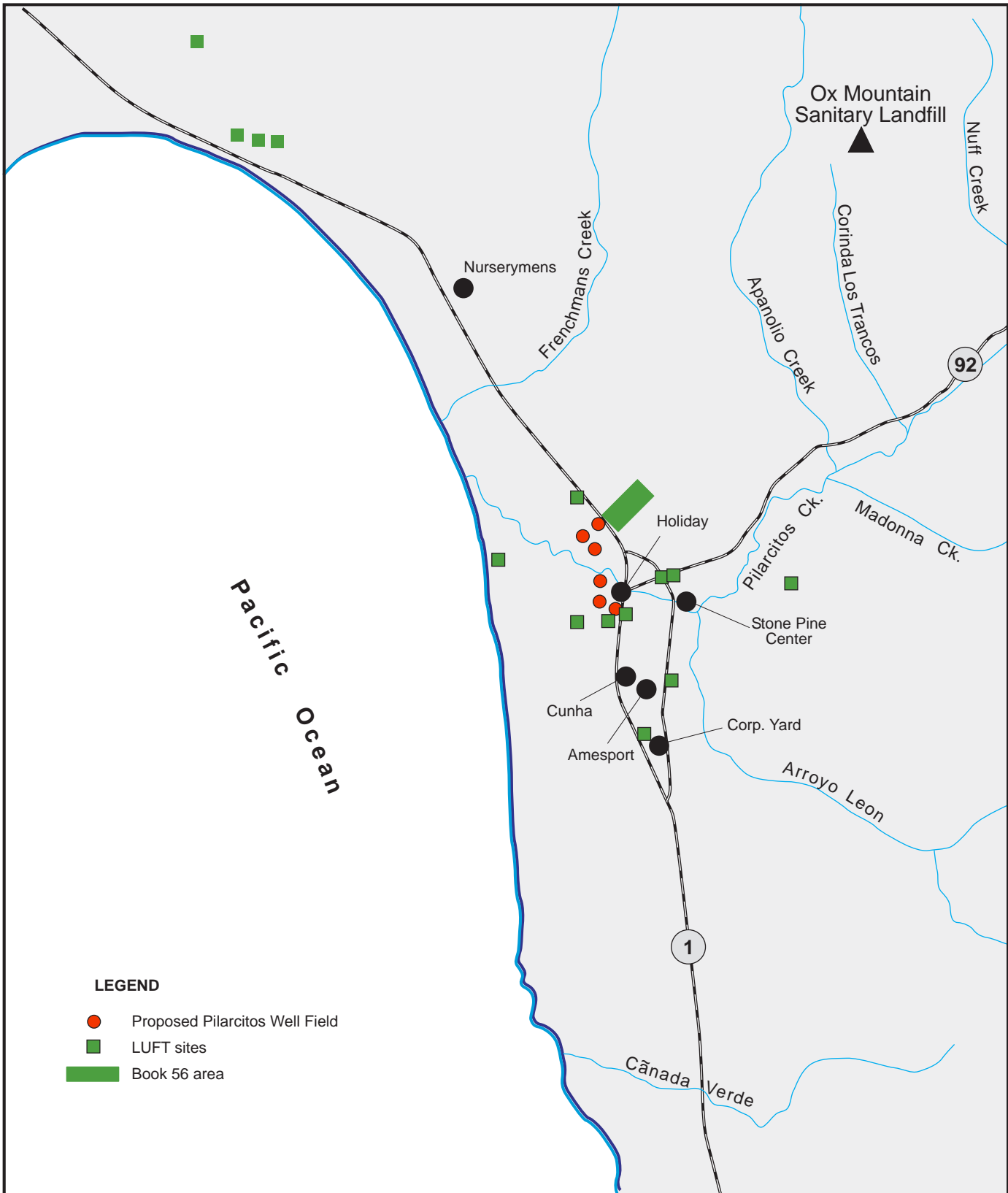
**Figure 18**  
**Cross Section C - C'**



June 2003

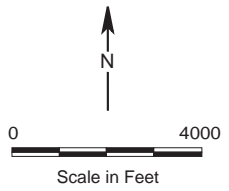
TODD ENGINEERS  
Emeryville, California

**Figure 19**  
**Water Level**  
**Hydrographs of**  
**Wells 29F04 and 32K**



**LEGEND**

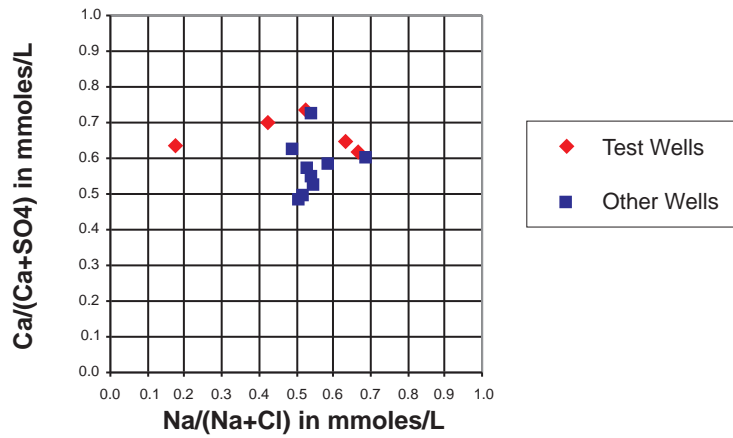
- Proposed Pilarcitos Well Field
- LUFT sites
- Book 56 area



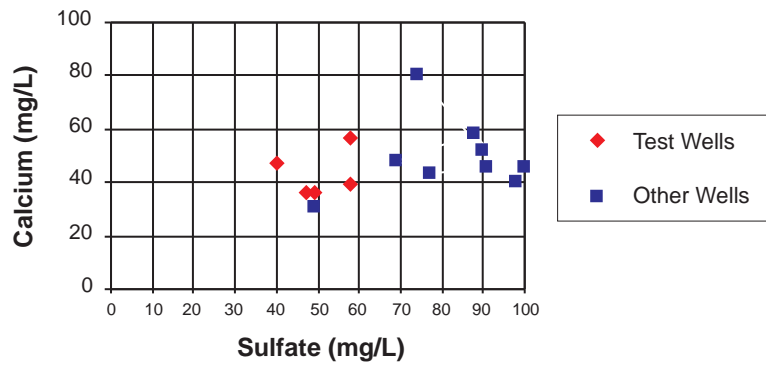
June 2003  
**TODD ENGINEERS**  
 Emeryville, California

**Figure 20**  
**Water**  
**Quality Assessment**

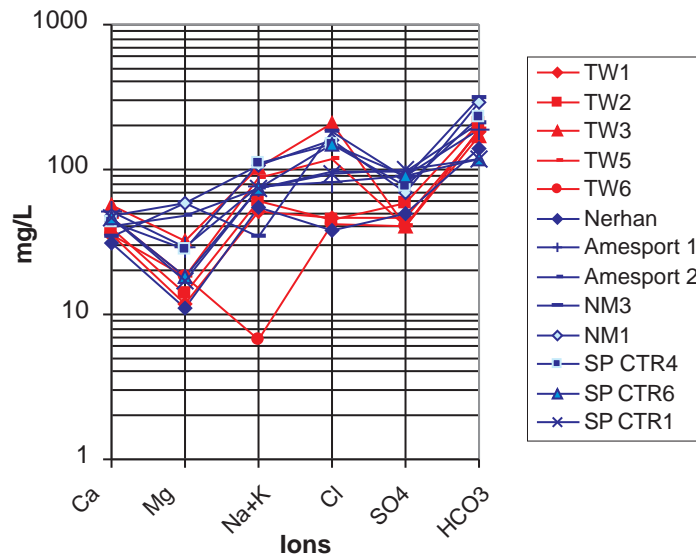
### A. Water Differentiation Diagram



### B. Calcium - Sulfate Diagram

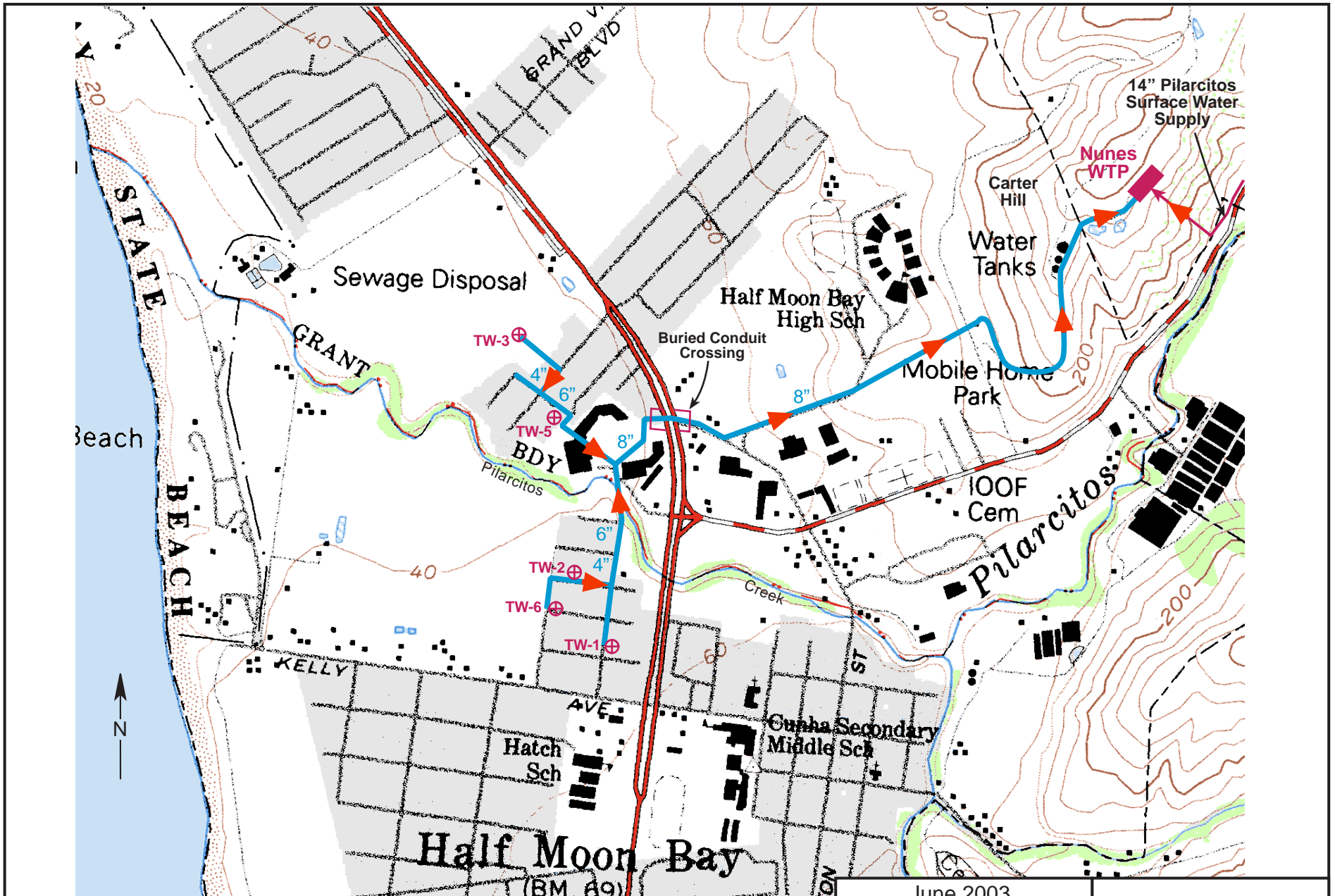


### C. Groundwater Source Diagram

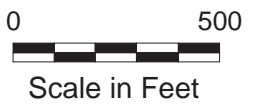


June 2003  
 TODD ENGINEERS  
 Emeryville, California

**Figure 21**  
**Water Quality**  
**Analysis**



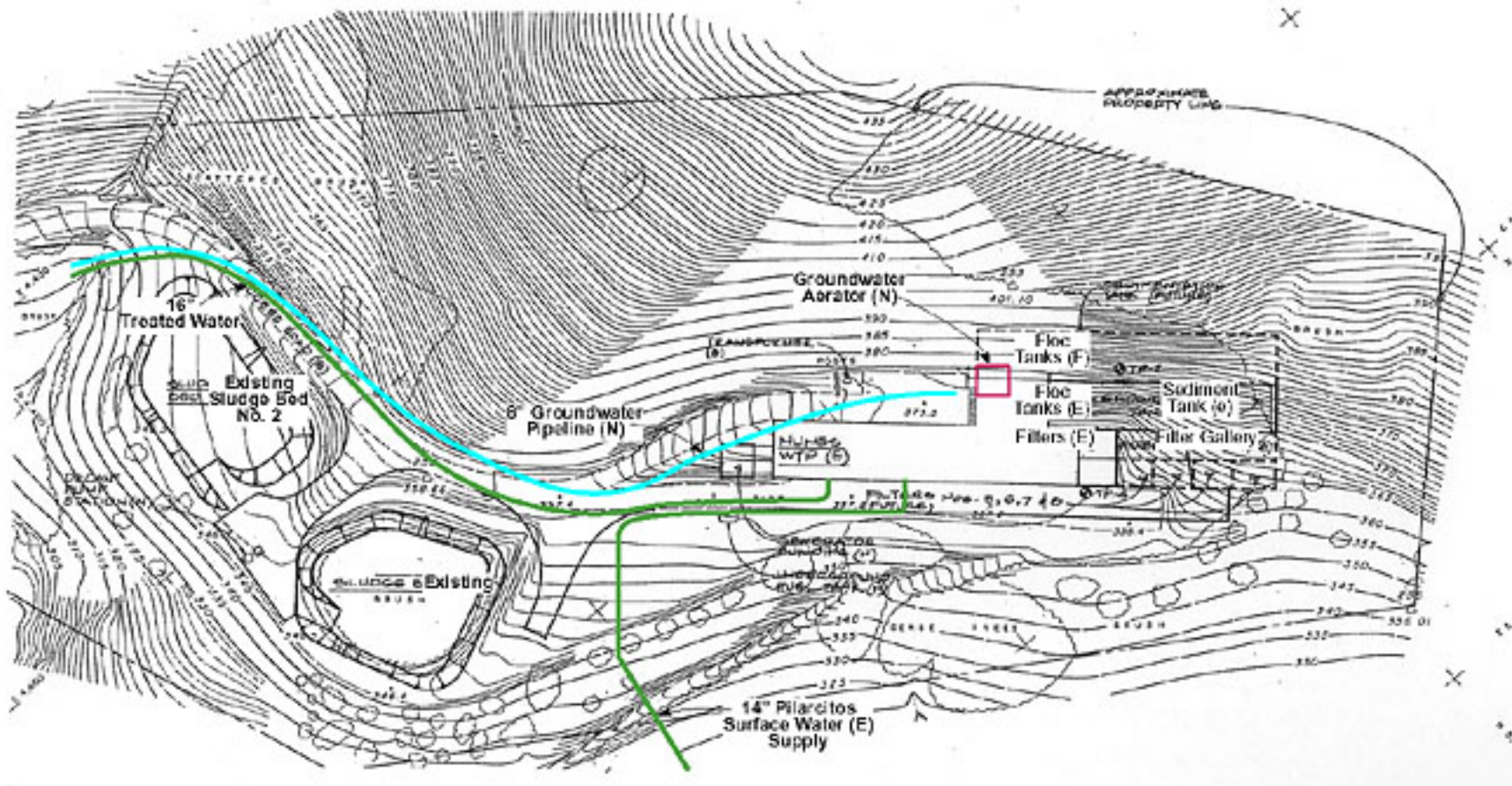
- ⊕ TW-2 Potential well
- 8" Pipeline size
- ▶ Flow direction



June 2003  
 TODD ENGINEERS  
 Emeryville, California

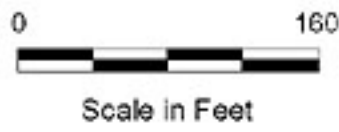
**Figure 22**  
**Groundwater Supply**  
**Evaluation Site Map**





**LEGEND**

- (E) Existing (1980)
- (N) New (1990)
- (N) New (this project)
- (F) Future



June 2003	<b>Figure 24</b> <b>Groundwater Supply</b> <b>Evaluation Nunes</b> <b>Water Treatment Plan</b>
<b>TODD ENGINEERS</b> Emeryville, California	

