

TOTAL CCWD PRODUCTION (MG) ALL SOURCES- FY 2012

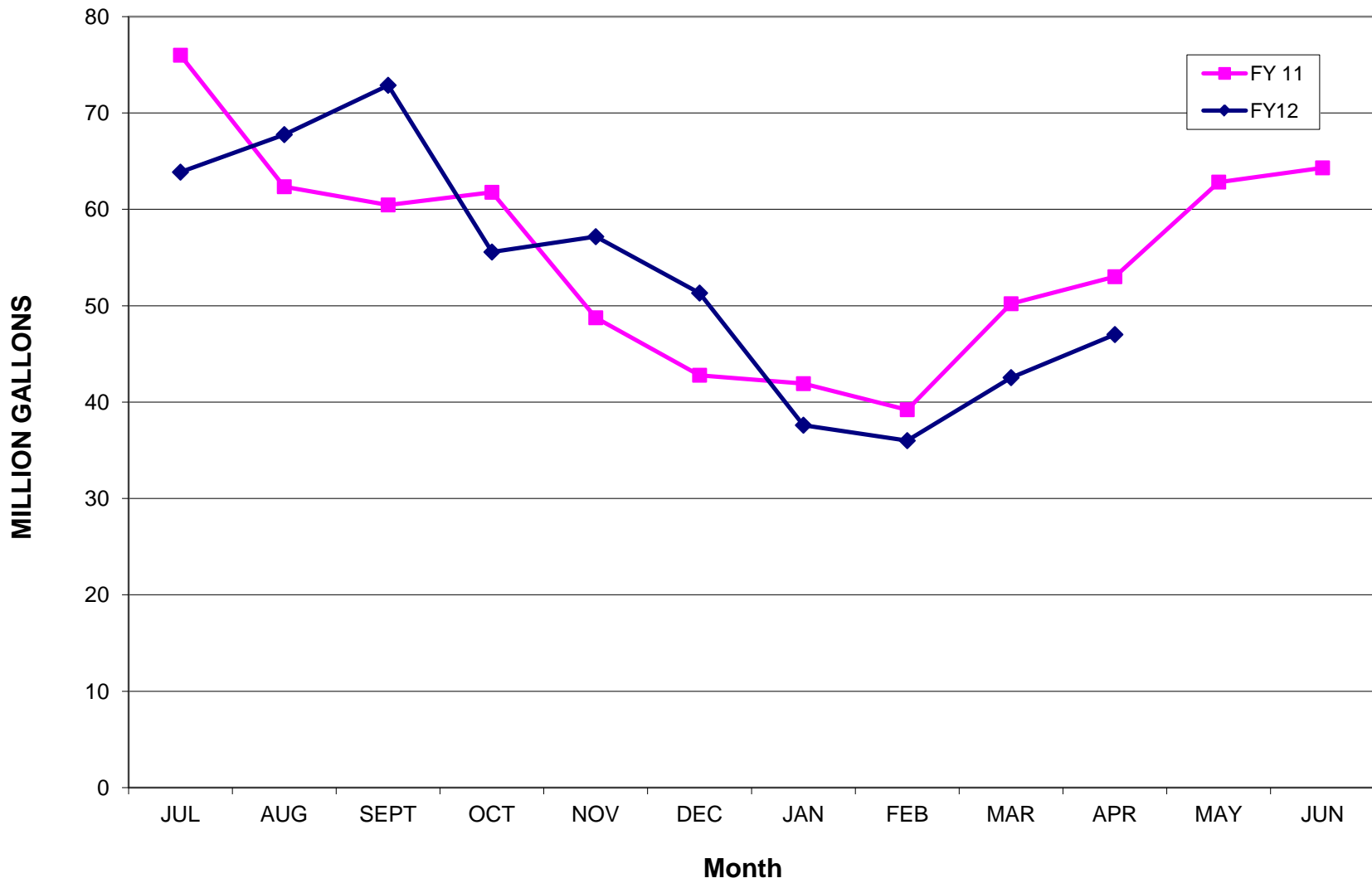
	PILARCITOS WELLS	PILARCITOS LAKE	DENNISTON WELLS	DENNISTON RESERVOIR	CRYSTAL SPRINGS RESERVOIR	RAW WATER TOTAL	UNMETERED WATER	TREATED TOTAL
JUL	0.00	62.65	0.00	0.00	1.03	63.68	-0.18	63.86
AUG	0.00	61.34	0.00	0.00	6.38	67.72	-0.03	67.75
SEPT	0.00	68.54	0.00	0.00	4.81	73.35	0.48	72.87
OCT	0.00	50.99	0.00	0.00	4.67	55.66	0.09	55.57
NOV	11.6	21.80	0	0.00	23.48	56.88	-0.28	57.16
DEC	7.2	27.02	0	0.00	16.82	51.04	-0.275	51.31
JAN	5.97	0	0	0.00	32.21	38.18	0.577	37.60
FEB	9.84	0.00	0.00	0.00	27.17	37.01	1.008	36.00
MAR	13.66	6.35	0.00	0.00	22.64	42.65	0.108	42.54
APR	0	46.73	0.00	0.00	0.28	47.01	-0.003	47.01
MAY								
JUN								
TOTAL	48.27	345.41	0.00	0.00	139.49	533.17	1.49	531.68
% TOTAL	9.1%	64.8%	0.0%	0.0%	26.2%	100.0%	0.28%	99.7%

12 Month Running Treated Total 658.82

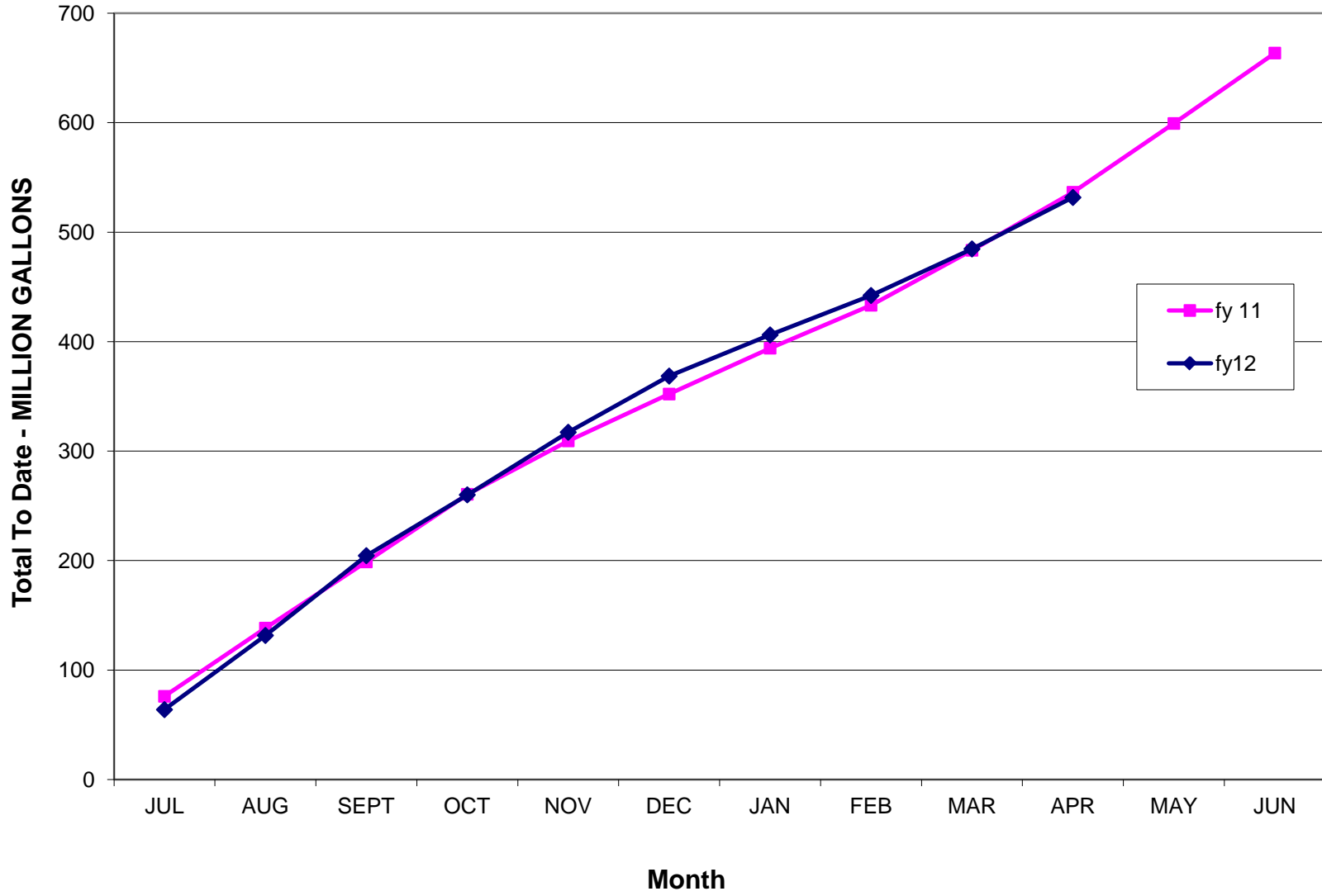
TOTAL CCWD PRODUCTION (MG) ALL SOURCES- FY 2011

	PILARCITOS WELLS	PILARCITOS LAKE	DENNISTON WELLS	DENNISTON RESERVOIR	CRYSTAL SPRINGS RESERVOIR	RAW WATER TOTAL	UNMETERED WATER	TREATED TOTAL
JUL	0.00	57.55	1.04	2.07	15.12	75.78	-0.21	75.99
AUG	0.00	41.40	0.80	3.03	18.17	63.40	1.06	62.35
SEPT	0.00	22.17	1.36	3.63	34.64	61.80	1.34	60.46
OCT	0.00	38.13	0.00	0.00	23.69	61.82	0.05	61.77
NOV	8.08	41.38	0.00	0.00	0.00	49.46	0.71	48.75
DEC	7.69	35.52	0.00	0.00	0.00	43.21	0.42	42.79
JAN	13.73	28.22	0.00	0.00	0.00	41.95	0.03	41.92
FEB	10.77	29.74	0.00	0.00	0.00	40.51	1.30	39.21
MAR	14.10	36.44	0.00	0.00	0.00	50.54	0.34	50.21
APR	0.00	44.15	0.00	0.00	8.71	52.86	-0.15	53.01
MAY	0.00	58.57	0.00	0.00	4.39	62.96	0.13	62.83
JUN	0.00	59.29	0.00	0.00	5.69	64.98	0.68	64.31
TOTAL	54.37	492.56	3.20	8.73	110.41	669.28	5.70	663.58
% TOTAL	8.1%	73.6%	0.5%	1.3%	16.5%	100.0%	0.85%	99.1%

Monthly Production FY 11 vs. FY 12



Cumulative Production FY 11 vs. FY12



Plant Water Use			Unmetered Water							
	Denniston Plant	Nunes Plant	Total	2012						MG
				Main Flushing	Detector Checks*	Main Breaks	Fire Dept	Tank Level Difference	Total	
JAN	0.000	1.532	1.532	0.000	0.055	0.015	0.010	0.498	0.577	
FEB	0.000	1.439	1.439	0.000	0.007	1.023	0.010	-0.032	1.008	
MAR	0.000	1.527	1.527	0.009	0.011	0.007	0.010	0.071	0.108	
APR	0.000		0.000	0.000	0.009	0.097	0.010	-0.118	-0.003	
MAY	0.000		0.000						0.000	
JUN	0.000		0.000						0.000	
JUL	0.000		0.000						0.000	
AUG	0.000		0.000						0.000	
SEP	0.000		0.000						0.000	
OCT	0.000		0.000						0.000	
NOV	0.000		0.000						0.000	
DEC			0.000						0.000	
TOTAL	0.00	4.50	4.50	0.01	0.08	1.14	0.04	0.42	1.69	

COASTSIDE COUNTY WATER DISTRICT

Predicted vs Actual Production - All Sources

	Denniston Surface			Denniston Wells			Pilarcitos Wells			Pilarcitos Surface			SFWD CSP			SFWD Total			
	Actual MG	Predicted MG	pred-act	Actual MG	Predicted	pred-act	Actual MG	Predicted MG	pred-act	Actual MG	Predicted MG	pred-act	Actual MG	Predicted MG	pred-act	Actual MG	Predicted MG		
Jul-11	0.00	0.00	0.00	0.00	0.00	0.00	0.00	0.00	0.00	62.65	60.66	-1.99	1.03	15.12	14.09	63.68	75.78		
Aug-11	0.00	0.00	0.00	0.00	0.00	0.00	0.00	0.00	0.00	61.34	45.23	-16.11	6.38	18.17	11.79	67.72	63.40		
Sep-11	0.00	0.00	0.00	0.00	0.00	0.00	0.00	0.00	0.00	68.54	27.16	-41.38	4.81	34.64	29.83	73.35	61.80		
Oct-11	0.00	0.00	0.00	0.00	0.00	0.00	0.00	0.00	0.00	50.99	38.13	-12.86	4.67	23.69	19.02	55.66	61.82		
Nov-11	0.00	0.00	0.00	0.00	0.00	0.00	0.00	0.00	11.60	9.72	-1.88	21.80	39.74	17.94	23.48	43.45	19.97	45.28	83.19
Dec-11	0.00	0.00	0.00	0.00	0.00	0.00	0.00	0.00	7.20	9.72	2.52	27.02	33.43	6.41	16.82	37.93	21.11	43.84	71.36
Jan-12	0.00	0.00	0.00	0.00	0.00	0.00	0.00	0.00	5.97	10.47	4.50	0.00	30.71	30.71	32.21	0.00	-32.21	32.21	30.71
Feb-12	0.00	0.00	0.00	0.00	0.00	0.00	0.00	0.00	9.84	11.22	1.38	0.00	30.54	30.54	27.17	0.00	-27.17	27.17	30.54
Mar-12	0.00	0.00	0.00	0.00	0.00	0.00	0.00	0.00	13.66	11.22	-2.44	6.35	38.12	31.77	22.64	0.00	-22.64	28.99	38.12
Apr-12	0.00	0.00	0.00	0.00	0.00	0.00	0.00	0.00	0.00	0.00	0.00	46.73	52.36	5.63	0.28	0.00	-0.28	47.01	52.36
May-12			#VALUE!		0.00		#VALUE!											0.00	#VALUE!
Jun-12			#VALUE!		0.00		#VALUE!											0.00	#VALUE!
MG Totals	0.00	0.00	0.00	0.00	0.00	0.00	0.00	48.27	52.35	4.08	345.41	396.08	50.67	139.49	173.00	33.51	484.90	#VALUE!	

Adjusted (estimated for meter failure)

	Actual non SFPUC	Predicted non SFPUC	Actual SFPUC	Predicted SFPUC	TOTAL Actual	TOTAL Predicted	TOTAL Pred-act
	48.27	52.35	484.90	569.08	533.17	621.43	88.26
% Total	9.05%	8.42%	90.95%	91.58%	85.80%		